

RECEIVED
LARAMIE COUNTY
CHEYENNE, WY.

CERTIFIED LAND CORNER RECORDATION 88 DEC 23 AM 9 09

DESCRIPTION OF CORNER EVIDENCE FOUND, AND ORIGINAL RECORD (If known)

Found: Gray-white granite stone, 4" x 8", with 3" protruding. Stone has 5 notches on south, 5 notches on east, "X" on top. Very clear notches.

Accessories found - Reference point (RP #2), a 5/8" rebar with alum. cap, set by LS 519. 45.95 feet from stone.

GLO: "Set a granite ^{boulder} stone 23" x 10" x 6" for corner to sections 5, 6, 7, & 8."

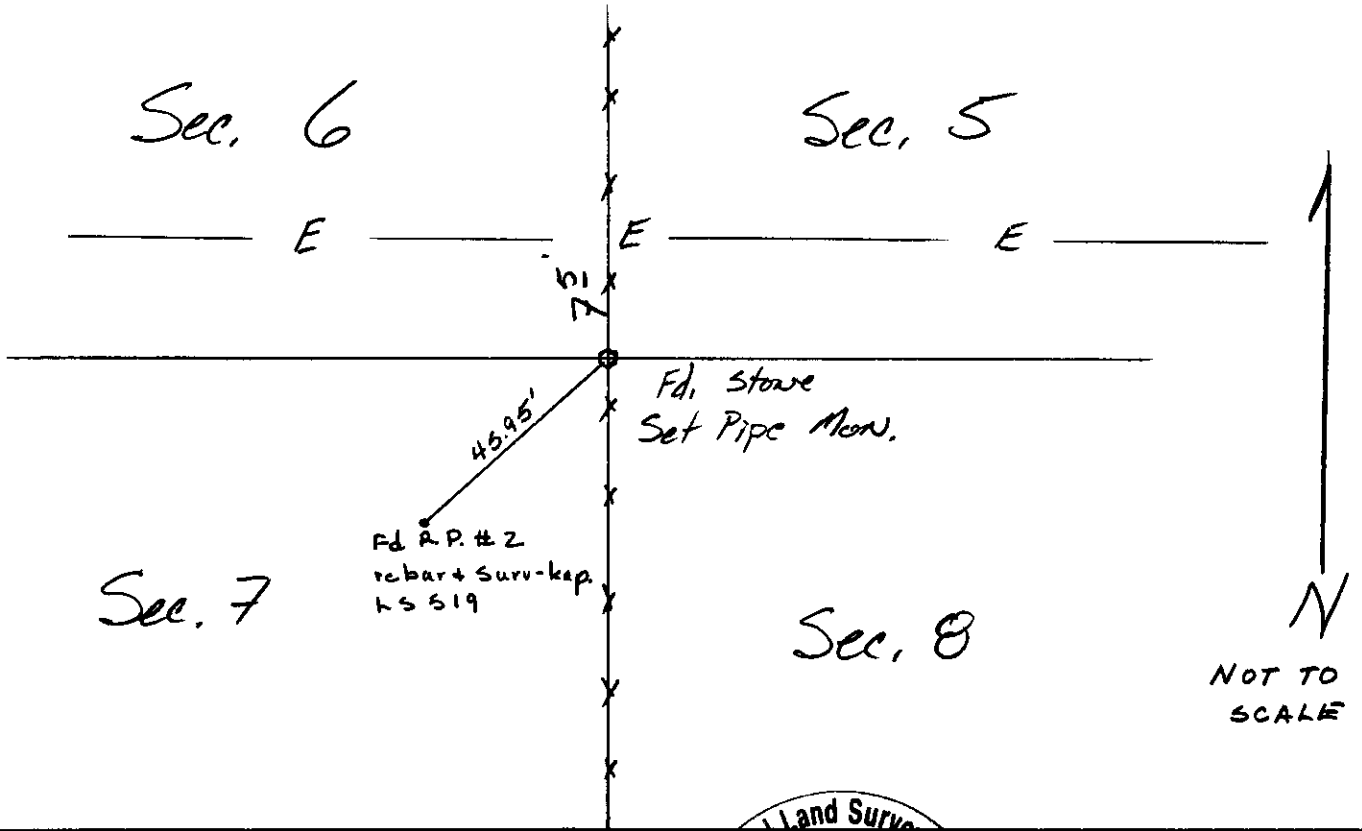
Sec. 6 | Sec. 5
Sec. 7 | Sec. 8

T 13N, R 64W

DESCRIPTION OF MONUMENT AND ACCESSORIES ESTABLISHED TO PERPETUATE THE ORIGINAL LOCATION OF THIS CORNER:

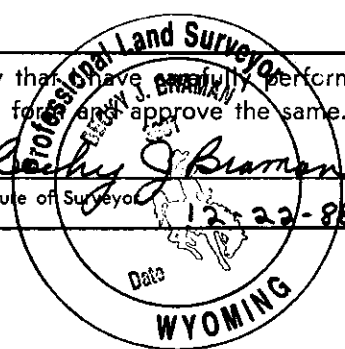
Set: Set aluminum pipe monument, 2" i.d., 36" long, with 3" aluminum cap. See Map of Survey filed with Laramie County Clerk for dimensions to adjacent corners. Left stone upsidedown alongside pipe as a memorial.

SKETCH, WITH COURSE AND DISTANCE TO ADJACENT CORNER IF DETERMINED IN THIS SURVEY. (May Sketch or Paste Reproduction on Reverse Side.)



I, BECKY J. BRAMAN certify that I have personally performed or reviewed the work done on the diagrammed corner as reported on this recordation for approval approve the same.

Becky J. Braman Signature of Surveyor P.L.S. 3881 Registration No.



STATE OF WYOMING,
Office of Clerk and Recorder,
County of LARAMIE

This "corner record" was filed for record on the _____ day of _____, 19____, was noted on the cross-index plat and is assigned page No. _____, in book No. _____.

County Official			
Cross Index No. <u>E5</u>	T. <u>13 N</u>	R. <u>64W 6th</u>	Mer.
_____	T. _____	R. _____	Mer.
_____	T. _____	R. _____	Mer.
_____	T. _____	R. _____	Mer.
_____	T. _____	R. _____	Mer.
_____	T. _____	R. _____	Mer.
_____	T. _____	R. _____	Mer.